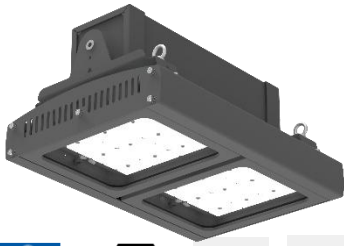


BERGER-N LED



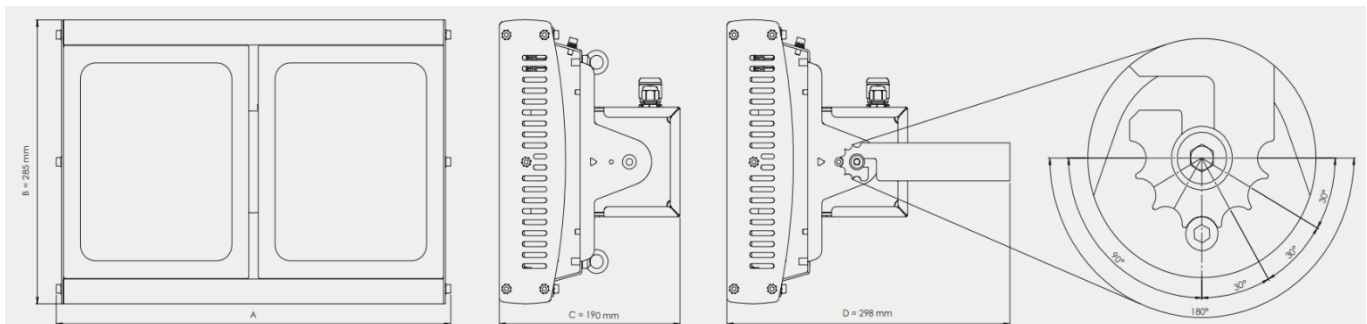
IP 66

IRC 80

100.000 horas

ESPECIFICACIONES TÉCNICAS

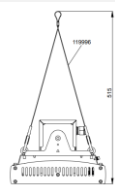
Certificado:	IECEX FTZU24.0004X FTZÚ 22 ATEX 0108X FTZÚ 22 ATEX 0107X
Marcado:	BERGER-N-LED zona 2/21 (IECEX FTZU24.0004X) Ex nR IIC T6...T5 Gc Ex tb op is IIIC T85°C Db BERGER-N-LED zona 2/21 (FTZÚ 22 ATEX 0107X) II 3G Ex nR IIC T6...T5 Gc II 2D Ex tb op is IIIC T85°C Db BERGER-N-LED zona 2/22 (FTZÚ 22 ATEX 0108X) II 3G Ex nR IIC T6...T5 Gc II 3D Ex tc IIIC T85°C Dc
Voltaje:	220-240 V, 50-60 Hz
Material:	Cuerpo: aluminio RAL 7043 Difusor: cristal de seguridad
Vida útil:	L70B50 Ta70 - 100000h
Montaje:	En superficie o suspensión, mediante soportes (no suministrados) Equipamiento estándar: 4 argollas de suspensión con perno M5 - acero inoxidable AISI 316, cable de 2 m (3 x 1,5 mm ²)
Bajo demanda:	DIM - DALI 3000K / 4000K / 5000K / 6500K



Ref	Descripción	LM	W	TC	Ta (°C)	Dimensiones (AxBxC mm)	T	Peso (Kg)
1 módulo - HME 250 - Ta 50°C								
46598	BERGER-N-LED-2,21-T50-30-12200-4K-1M, IP66	10031						
46024	BERGER-N-LED-2,21-T50-60-12200-4K-1M, IP66	10767						
46026	BERGER-N-LED-2,21-T50-90-12200-4K-1M, IP66	10922	69	4000K	-20°C/+50°C	415x285x190	T6	8,5
46601	BERGER-N-LED-2,21-T50-AS-12200-4K-1M, IP66	9700						
46030	BERGER-N-LED-2,21-T50-WO-12200-4K-1M, IP66	10566						
1 módulo - Ta 60°C								
46614	BERGER-N-LED-2,21-T60-30-9900-4K-1M, IP66	8220						
46052	BERGER-N-LED-2,21-T60-60-9900-4K-1M, IP66	8799						
46053	BERGER-N-LED-2,21-T60-90-9900-4K-1M, IP66	8933	54	4000K	-20°C/+60°C	415x285x190	T5	8,5
46617	BERGER-N-LED-2,21-T60-AS-9900-4K-1M, IP66	7948						
46056	BERGER-N-LED-2,21-T60-WO-9900-4K-1M, IP66	8622						

Ref	Descripción	LM	W	TC	Ta (°C)	Dimensiones (AxBxC mm)	T	Peso (Kg)
1 módulo LED - Ta 70°C								
46628	BERGER-N-LED-2,21-T70-30-6350-4K-1M, IP66	5298						
46075	BERGER-N-LED-2,21-T70-60-6350-4K-1M, IP66	5666						
46076	BERGER-N-LED-2,21-T70-90-6350-4K-1M, IP66	5764	33	4000K	-20°C/+70°C	415x285x190	T5	8,5
46629	BERGER-N-LED-2,21-T70-AS-6350-4K-1M, IP66	5130						
46079	BERGER-N-LED-2,21-T70-WO-6350-4K-1M, IP66	5580						
1 módulo LED - Ta -40°C								
46636	BERGER-N-LED-2,21-FROST-30-9900-4K-1M, IP66	8220						
46097	BERGER-N-LED-2,21-FROST-60-9900-4K-1M, IP66	8799						
46100	BERGER-N-LED-2,21-FROST-90-9900-4K-1M, IP66	8933	54	4000K	-40°C/+50°C	415x285x190	T6	8,5
46637	BERGER-N-LED-2,21-FROST-AS-9900-4K-1M, IP66	7948						
46101	BERGER-N-LED-2,21-FROST-WO-9900-4K-1M, IP66	8622						
2 módulos LED - HIT 250, HME 400 - Ta 50°C								
46602	BERGER-N-LED-2,21-T50-30-24400-4K-2M, IP66	20061						
46033	BERGER-N-LED-2,21-T50-60-24400-4K-2M, IP66	21534						
46034	BERGER-N-LED-2,21-T50-90-24400-4K-2M, IP66	21844	136	4000K	-20°C/+50°C	415x285x190	T6	11
46605	BERGER-N-LED-2,21-T50-AS-24400-4K-2M, IP66	19399						
46037	BERGER-N-LED-2,21-T50-WO-24400-4K-2M, IP66	21132						
2 módulos LED - HIT 250, HME 400 - Ta 60°C								
46619	BERGER-N-LED-2,21-T60-30-19800-4K-2M, IP66	16439						
46121	BERGER-N-LED-2,21-T60-60-19800-4K-2M, IP66	17597						
46059	BERGER-N-LED-2,21-T60-90-19800-4K-2M, IP66	17866	107	4000K	-20°C/+60°C	415x285x190	T5	11
46620	BERGER-N-LED-2,21-T60-AS-19800-4K-2M, IP66	15895						
46060	BERGER-N-LED-2,21-T60-WO-19800-4K-2M, IP66	17243						
2 módulos LED - HME 250 - Ta 70°C								
46630	BERGER-N-LED-2,21-T70-30-12700-4K-2M, IP66	10595						
46080	BERGER-N-LED-2,21-T70-60-12700-4K-2M, IP66	11331						
46082	BERGER-N-LED-2,21-T70-90-12700-4K-2M, IP66	11528	67	4000K	-20°C/+70°C	415x285x190	T5	11
46631	BERGER-N-LED-2,21-T70-AS-12700-4K-2M, IP66	10259						
46085	BERGER-N-LED-2,21-T70-WO-12700-4K-2M, IP66	11160						
2 módulos LED - Ta -40°C								
46638	BERGER-N-LED-2,21-FROST-30-19800-4K-2M, IP66	16439						
46104	BERGER-N-LED-2,21-FROST-60-19800-4K-2M, IP66	17597						
46105	BERGER-N-LED-2,21-FROST-90-19800-4K-2M, IP66	17866	107	4000K	-40°C/+50°C	415x285x190	T6	11
46639	BERGER-N-LED-2,21-FROST-AS-19800-4K-2M, IP66	15895						
46107	BERGER-N-LED-2,21-FROST-WO-19800-4K-2M-IP66	17243						
3 módulos LED - HIT 400 - Ta 50°C								
46606	BERGER-N-LED-2,21-T50-30-36600-4K-3M, IP66	29812						
46038	BERGER-N-LED-2,21-T50-60-36600-4K-3M, IP66	32252						
46041	BERGER-N-LED-2,21-T50-90-36600-4K-3M, IP66	32726	204	4000K	-20°C/+50°C	620x285x190	T6	14
46609	BERGER-N-LED-2,21-T50-AS-36600-4K-3M, IP66	29159						
46042	BERGER-N-LED-2,21-T50-WO-36600-4K-3M, IP66	31659						
3 módulos LED - HIT 250, HME 400 - Ta 60°C								
46624	BERGER-N-LED-2,21-T60-30-26200-4K-3M, IP66	21603						
46063	BERGER-N-LED-2,21-T60-60-26200-4K-3M, IP66	23408						
46064	BERGER-N-LED-2,21-T60-90-26200-4K-3M, IP66	23622	144	4000K	-20°C/+60°C	620x285x190	T5	14
46625	BERGER-N-LED-2,21-T60-AS-26200-4K-3M, IP66	21060						
46067	BERGER-N-LED-2,21-T60-WO-26200-4K-3M, IP66	22899						
3 módulos LED - Ta 70°C								
46632	BERGER-N-LED-2,21-T70-30-17800-4K-3M, IP66	14748						
46086	BERGER-N-LED-2,21-T70-60-17800-4K-3M, IP66	16002						
46089	BERGER-N-LED-2,21-T70-90-17800-4K-3M, IP66	16130	94	4000K	-20°C/+70°C	620x285x190	T5	14
46633	BERGER-N-LED-2,21-T70-AS-17800-4K-3M, IP66	14346						
46090	BERGER-N-LED-2,21-T70-WO-17800-4K-3M, IP66	15641						
3 módulos LED - Ta -40°C								
46640	BERGER-N-LED-2,21-FROST-30-26200-4K-3M, IP66	21603						
46110	BERGER-N-LED-2,21-FROST-60-26200-4K-3M, IP66	23408						
46111	BERGER-N-LED-2,21-FROST-90-26200-4K-3M, IP66	23622	144	4000K	-40°C/+50°C	620x285x190	T6	14
46641	BERGER-N-LED-2,21-FROST-AS-26200-4K-3M, IP66	21060						
46114	BERGER-N-LED-2,21-FROST-WO-26200-4K-3M, IP66	22899						

Ref	Descripción	LM	W	TC	Ta (°C)	Dimensiones (AxBxC mm)	T	Peso (Kg)
4 módulos LED - HIT 400 - Ta 40°C								
46610	BERGER-N-LED-2,21-T40-30-48800-4K-4M, IP66	39749						
46045	BERGER-N-LED-2,21-T40-60-48800-4K-4M, IP66	43002						
46048	BERGER-N-LED-2,21-T40-90-48800-4K-4M, IP66	43634	287	4000K	-20°C/+40°C	825x285x190	T6	17
46613	BERGER-N-LED-2,21-T40-AS-48800-4K-4M, IP66	38879						
46049	BERGER-N-LED-2,21-T40-WO-48800-4K-4M, IP66	42212						
4 módulos LED - Ta 60°C								
46626	BERGER-N-LED-2,21-T60-30-30200-4K-4M, IP66	24897						
46068	BERGER-N-LED-2,21-T60-60-30200-4K-4M, IP66	26977						
46071	BERGER-N-LED-2,21-T60-90-30200-4K-4M, IP66	27224	163	4000K	-20°C/+60°C	825x285x190	T5	17
46627	BERGER-N-LED-2,21-T60-AS-30200-4K-4M, IP66	24271						
46072	BERGER-N-LED-2,21-T60-WO-30200-4K-4M, IP66	26391						
4 módulos LED - HIT 250, HME 400 - Ta 70°C								
46634	BERGER-N-LED-2,21-T70-30-24150-4K-4M, IP66	20012						
46122	BERGER-N-LED-2,21-T70-60-24150-4K-4M, IP66	21714						
46092	BERGER-N-LED-2,21-T70-90-24150-4K-4M, IP66	21888	122	4000K	-20°C/+70°C	825x285x190	T5	17
46635	BERGER-N-LED-2,21-T70-AS-24150-4K-4M, IP66	19466						
46096	BERGER-N-LED-2,21-T70-WO-24150-4K-4M, IP66	21224						
4 módulos LED - Ta -40°C								
46642	BERGER-N-LED-2,21-FROST-30-30200-4K-4M, IP66	24897						
46116	BERGER-N-LED-2,21-FROST-60-30200-4K-4M, IP66	26977						
46117	BERGER-N-LED-2,21-FROST-90-30200-4K-4M, IP66	27224	163	4000K	-40°C/+50°C	825x285x190	T6	17
46643	BERGER-N-LED-2,21-FROST-AS-30200-4K-4M, IP66	24271						
46120	BERGER-N-LED-2,21-FROST-WO-30200-4K-4M, IP66	26391						

Ref	Accesorio	
62192	Soporte ajustable	
57848	Cable suspensión 0,3m (2ud)	

Módulos		Módulos	
1		3	
2		4	