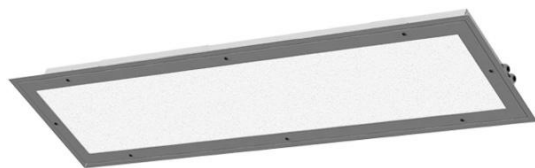


EXF390LED - Estándar y Emergencia



IP 65



IRC 80

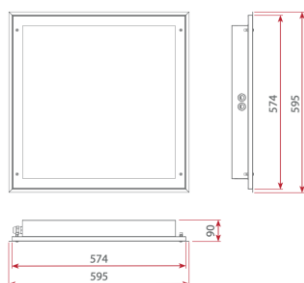
70.000 horas

100.000 horas

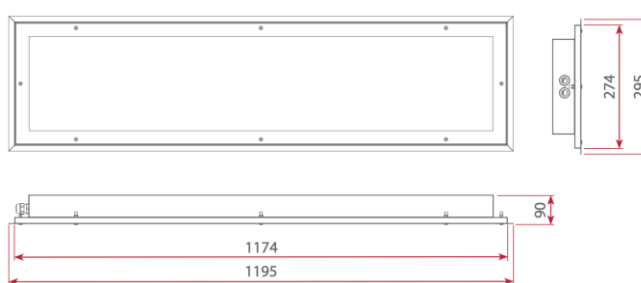
ESPECIFICACIONES TÉCNICAS

Certificado:	JSHP 20 ATEX 0071X
Marcado:	II 2G Ex eb mb op is IIC T5 Gb II 2D Ex tb op is IIIC T70°C Db
Temperatura:	-40°C ≤ T _a ≤ +55°C Versión A3: 0°C ≤ T _a ≤ +45°C
Voltaje:	35E: 220 - 240 V 0/50-60 Hz 25E: 110 -254 V 50-60 Hz, 220 - 240 V 0 Hz
Vida útil:	L80B10 >70000h L70B10 >100000h
Bornas conexión:	2,5 mm ²
Entradas cable:	Ø20
Material:	Cuerpo: acero o acero inoxidable Difusor: policarbonato ópalo o cristal temperado
Montaje:	Empotrado en falso techo con accesorio 31-390-0600RC (no incluido) En superficie

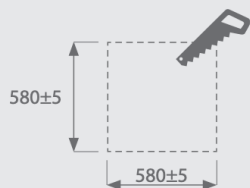
EXF390LED-0600-RC



EXF30LED-1200-RC

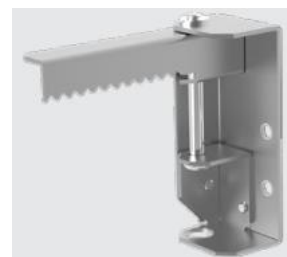


EXF390LED-0600-..-RC



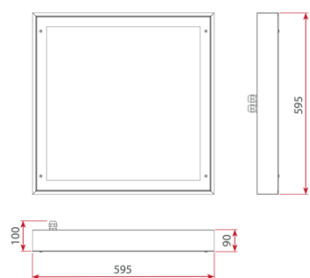
CUTOUT

EXF390LED-1200-..-RC

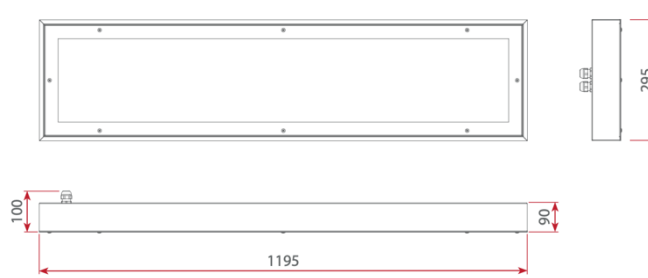


31-390-0600RC

EXF390LED-0600-SF



EXF30LED-1200-SF



Ref	Descripción	Potencia	LM	A3 LM	TC
31-391-06FA450	EXF390LED-0600-FA4-25E-30-11P20-NIRO-PC	48 W	5230		
31-391-12FA250	EXF390LED-1200-FA2-25E-30-11P20-NIRO-PC	25 W	2615		
31-391-12FA450	EXF390LED-1200-FA4-25E-30-11P20-NIRO-PC	48 W	5230		
31-391-06FA451	EXF390LED-0600-FA4-25E-30-11P20-NIRO-GL	48 W	5230		
31-391-12FA251	EXF390LED-1200-FA2-25E-30-11P20-NIRO-GL	25 W	2615		
31-391-12FA451	EXF390LED-1200-FA4-25E-30-11P20-NIRO-GL	48 W	5230		
31-391-06FA456	EXF390LED-0600-FA4-1-35E-30-11P20-NIRO-PC	31,2 W	4047		
31-391-06FA457	EXF390LED-0600-FA4-2-35E-30-11P20-NIRO-PC	37,4 W	4871		
31-391-06FA458	EXF390LED-0600-FA4-3-35E-30-11P20-NIRO-PC	43,7 W	5680		
31-391-12FA256	EXF390LED-1200-FA2-1-35E-30-11P20-NIRO-PC	15,6 W	1957		
31-391-12FA257	EXF390LED-1200-FA2-2-35E-30-11P20-NIRO-PC	18,7 W	2355		
31-391-12FA258	EXF390LED-1200-FA2-3-35E-30-11P20-NIRO-PC	21,9 W	2746		
31-391-12FA456	EXF390LED-1200-FA4-1-35E-30-11P20-NIRO-PC	31,2 W	3913		
31-391-12FA457	EXF390LED-1200-FA4-2-35E-30-11P20-NIRO-PC	37,4 W	4710		
31-391-12FA458	EXF390LED-1200-FA4-3-35E-30-11P20-NIRO-PC	43,7 W	5492		
31-391-06FA459	EXF390LED-0600-FA4-1-35E-30-11P20-NIRO-GL	31,2 W	4047		
31-391-06FA460	EXF390LED-0600-FA4-2-35E-30-11P20-NIRO-GL	37,4 W	4871		
31-391-06FA461	EXF390LED-0600-FA4-3-35E-30-11P20-NIRO-GL	43,7 W	5680		
31-391-12FA259	EXF390LED-1200-FA2-1-35E-30-11P20-NIRO-GL	15,6 W	1957		
31-391-12FA260	EXF390LED-1200-FA2-2-35E-30-11P20-NIRO-GL	18,7 W	2355		
31-391-12FA261	EXF390LED-1200-FA2-3-35E-30-11P20-NIRO-GL	21,9 W	2746		
31-391-12FA459	EXF390LED-1200-FA4-1-35E-30-11P20-NIRO-GL	31,2 W	3913		
31-391-12FA460	EXF390LED-1200-FA4-2-35E-30-11P20-NIRO-GL	37,4 W	4710		
31-391-12FA461	EXF390LED-1200-FA4-3-35E-30-11P20-NIRO-GL	43,7 W	5492		
31-391-06FA452	EXF390LED-0600-FA4-25E-40-11P20-NIRO-PC-A3	48 W	5230	172	
31-391-12FA252	EXF390LED-1200-FA2-25E-40-11P20-NIRO-PC-A3	25 W	2615	280	
31-391-12FA452	EXF390LED-1200-FA4-25E-40-11P20-NIRO-PC-A3	48 W	5230	166	
31-391-06FA453	EXF390LED-0600-FA4-25E-40-11P20-NIRO-GL-A3	48 W	5230	172	
31-391-12FA253	EXF390LED-1200-FA2-25E-40-11P20-NIRO-GL-A3	25 W	2615	280	
31-391-12FA453	EXF390LED-1200-FA4-25E-40-11P20-NIRO-GL-A3	48 W	5230	166	
31-391-06FA454	EXF390LED-0600-FA4-25E-30-11P20-NIRO-PC-ZB	48 W	5230		
31-391-12FA254	EXF390LED-1200-FA2-25E-30-11P20-NIRO-PC-ZB	25 W	2615		
31-391-12FA454	EXF390LED-1200-FA4-25E-30-11P20-NIRO-PC-ZB	48 W	5230		
31-391-06FA455	EXF390LED-0600-FA4-25E-30-11P20-NIRO-GL-ZB	48 W	5230		
31-391-12FA255	EXF390LED-1200-FA2-25E-30-11P20-NIRO-GL-ZB	25 W	2615		
31-391-12FA455	EXF390LED-1200-FA4-25E-30-11P20-NIRO-GL-ZB	48 W	5230		
31-391-06FA462	EXF390LED-0600-FA4-1-35E-30-11P20-NIRO-PC-ZB	31,2 W	2024		
31-391-06FA463	EXF390LED-0600-FA4-2-35E-30-11P20-NIRO-PC-ZB	37,4 W	2436		
31-391-06FA464	EXF390LED-0600-FA4-3-35E-30-11P20-NIRO-PC-ZB	43,7 W	2840		
31-391-12FA262	EXF390LED-1200-FA2-1-35E-30-11P20-NIRO-PC-ZB	15,6 W	979		
31-391-12FA263	EXF390LED-1200-FA2-2-35E-30-11P20-NIRO-PC-ZB	18,7 W	1173		
31-391-12FA264	EXF390LED-1200-FA2-3-35E-30-11P20-NIRO-PC-ZB	21,9 W	1363		
31-391-12FA462	EXF390LED-1200-FA4-1-35E-30-11P20-NIRO-PC-ZB	31,2 W	1957		
31-391-12FA463	EXF390LED-1200-FA4-2-35E-30-11P20-NIRO-PC-ZB	37,4 W	2355		
31-391-12FA464	EXF390LED-1200-FA4-3-35E-30-11P20-NIRO-PC-ZB	43,7 W	2746		
31-391-06FA465	EXF390LED-0600-FA4-1-35E-30-11P20-NIRO-GL-ZB	31,2 W	2024		
31-391-06FA466	EXF390LED-0600-FA4-2-35E-30-11P20-NIRO-GL-ZB	37,4 W	2436		
31-391-06FA467	EXF390LED-0600-FA4-3-35E-30-11P20-NIRO-GL-ZB	43,7 W	2840		
31-391-12FA265	EXF390LED-1200-FA2-1-35E-30-11P20-NIRO-GL-ZB	15,6 W	979		
31-391-12FA266	EXF390LED-1200-FA2-2-35E-30-11P20-NIRO-GL-ZB	18,7 W	1173		
31-391-12FA267	EXF390LED-1200-FA2-3-35E-30-11P20-NIRO-GL-ZB	21,9 W	1363		
31-391-12FA465	EXF390LED-1200-FA4-1-35E-30-11P20-NIRO-GL-ZB	31,2 W	1957		
31-391-12FA466	EXF390LED-1200-FA4-2-35E-30-11P20-NIRO-GL-ZB	37,4 W	2355		
31-391-12FA467	EXF390LED-1200-FA4-3-35E-30-11P20-NIRO-GL-ZB	43,7 W	2746		

4000K

Sigla	Descripción
25E	110-254V 50-60Hz, 220-240V 0Hz
35E	220-240V, 0/50-60Hz
30	Terminal individual tripolar
11	2 entradas de cable en un lado de la carcasa
M	Metal
P	Plástico
NIRO	Acero inoxidable
GL	Cristal temperado
PC	Polycarbonato
A3	Versión con emergencia 3h. Disponible en version 25E. Funciona con temperatura superior a 0°C
ZB	Versión con dirver para batería central
RC	Empotrable
SF	Superficie